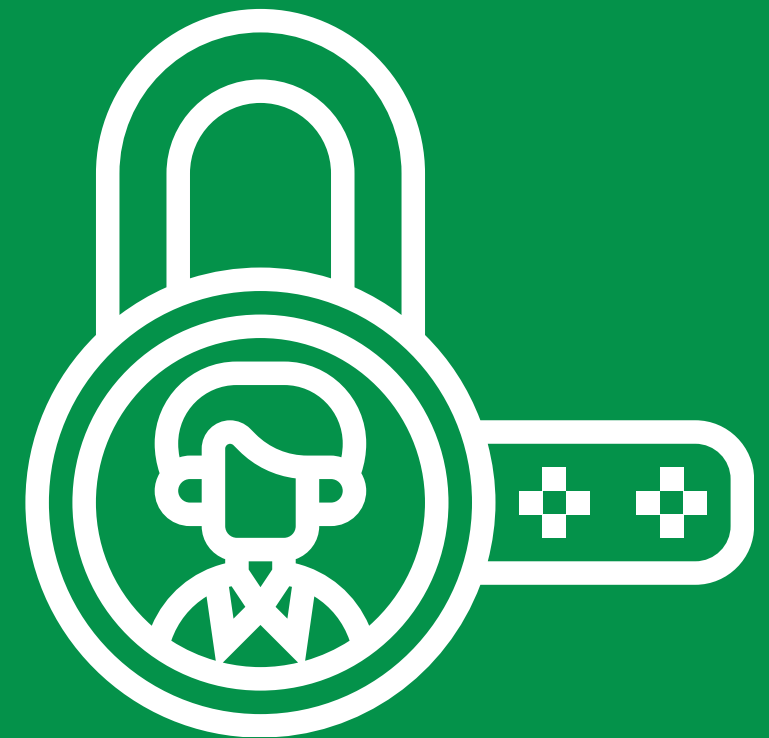


MACHINE GUARDING

Keep safeguards affixed and secured to the machine.



Lockout/tagout the machine when guards need to be removed for maintenance or cleaning.



Only operate machines with guards in place.



Do not operate the machine if guards are damaged, missing or provide inadequate protection.



Long hair, jewelry, gloves and loose clothing are potential entanglement hazards and should be kept away from machinery.



**THINK
BEFORE
YOU
START!**



Together, let's do our part to keep each other safe